



ARKANSAS  
Department of Environmental Quality

**ADDITIONAL ACREAGE REQUEST  
FOR STORMWATER CONSTRUCTION GENERAL PERMIT ARR150000**

Permit Number: ARR154223 AFIN: 70-00040  
Permittee Name: El Dorado Chemical Company  
Project Name: El Dorado Chemical Company

Current Disturbed Acreage 11.0 Additional Disturbed Acreage 8.2 Requested Disturbed Acreage 18.2  
Current Total Acreage 150 Additional Total Acreage 8.2 Requested Total Acreage 158.2

Current Disturbed Acreage + Additional Disturbed Acreage = Requested Disturbed Acreage  
Current Total Acreage + Additional Total Acreage = Requested Total Acreage

**SIGNATORY REQUIREMENTS:**

"I certify under penalty of law that this document and all attachments were prepared under my direction, or supervision, in accordance with a system designed to assure that qualified personnel properly gather and evaluate the information submitted. Based on my inquiry of the person or persons who manage the system, or those persons directly responsible for gathering the information, the information submitted is, to the best of my knowledge and belief, true, accurate, and complete. I am aware that there are significant penalties for submitting false information, including the possibility of fine and imprisonment for knowing violations."

Responsible/Cognizant Official Printed Name: Greg Withrow

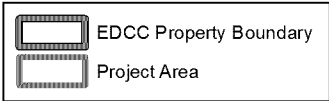
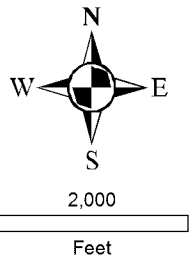
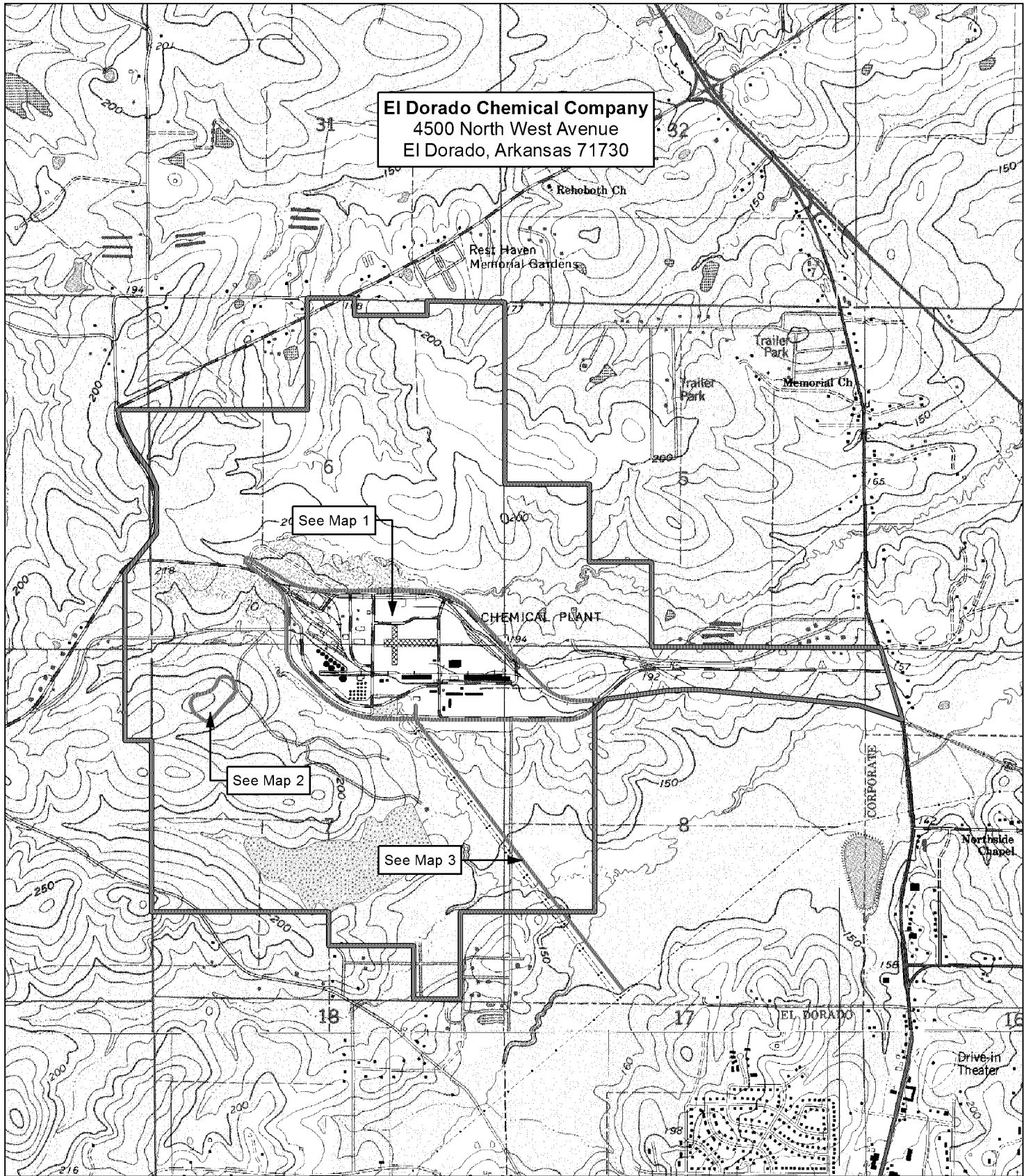
Responsible/Cognizant Official Title: General Manager

Responsible/Cognizant Official Signature: *Gregory Withrow*

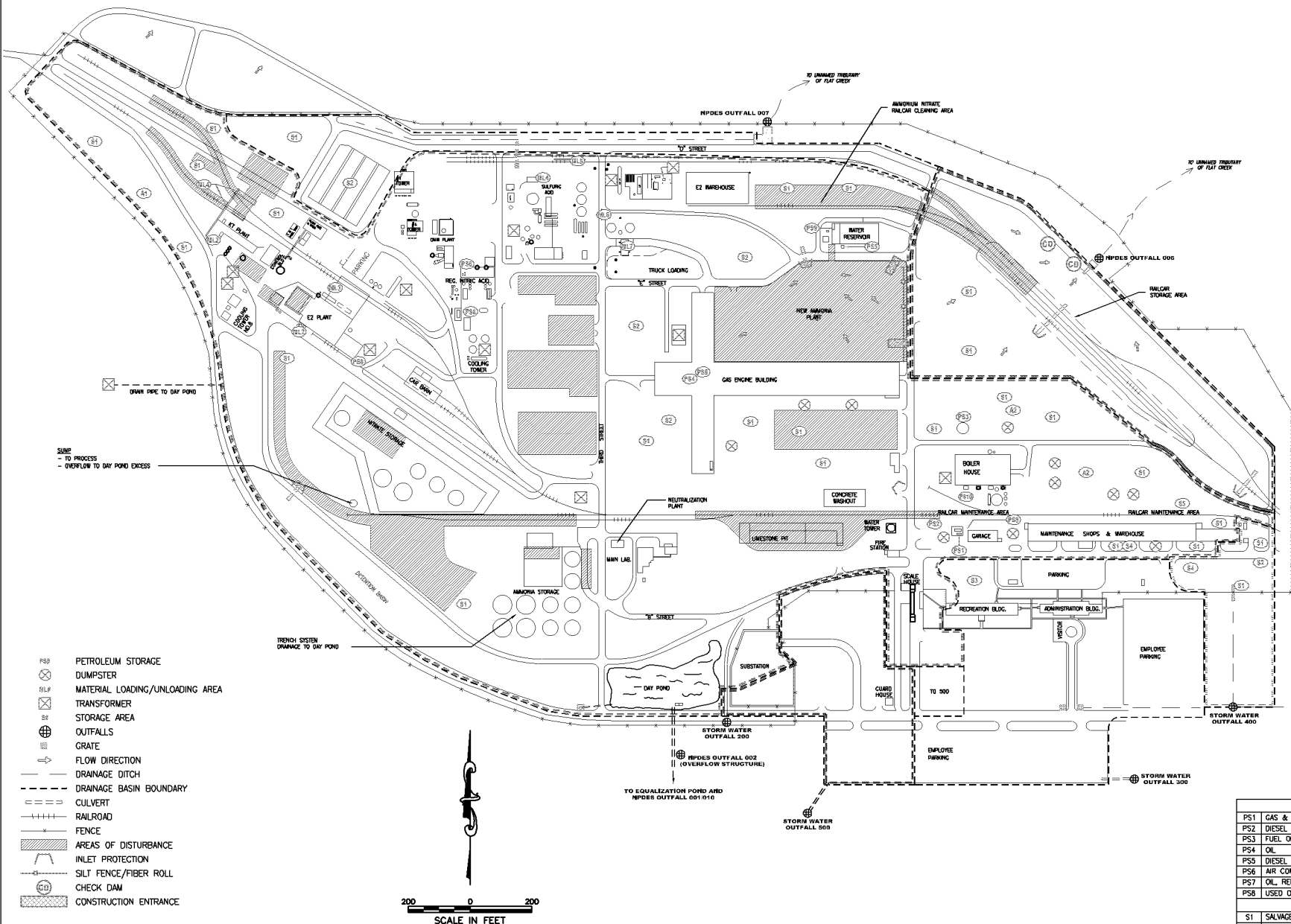
Date: 9/29/14

**ATTACH AN UPDATED SITE MAP THAT CONTAINS ALL ITEMS LISTED IN PART II.A.4.F OF THE ARR150000 PERMIT.**

Updated copies of the site map and Stormwater Pollution Prevention Plan (SWPPP) should be kept at the site.

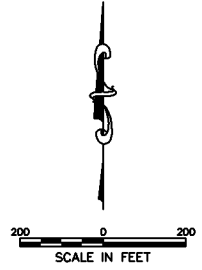


2042.000.G1	
CONSTRUCTION STORMWATER POLLUTION PREVENTION PLAN SITE MAP	
EL DORADO CHEMICAL COMPANY EL DORADO, ARKANSAS	
Approved by: JJF	Project No.: 2042-99-010
Checked by: JJF	Date: 09/01/2014
Drawn by: IT	Scale: SHOWN



- PSB PETROLEUM STORAGE
- DUMPSTER
- MLF MATERIAL LOADING/UNLOADING AREA
- TRANSFORMER
- STORAGE AREA
- OUTFALLS
- GRATE
- FLOW DIRECTION
- DRAINAGE DITCH
- DRAINAGE BASIN BOUNDARY
- CULVERT
- RAILROAD
- FENCE
- AREAS OF DISTURBANCE
- INLET PROTECTION
- SILT FENCE/FIBER ROLL
- CHECK DAM
- CONSTRUCTION ENTRANCE

- ==== NPDES OUTFALL 001/002 DRAINAGE BASIN (93.45 ACRES)
- ==== NPDES OUTFALL 006 DRAINAGE BASIN (11.80 ACRES)
- ==== NPDES OUTFALL 007 DRAINAGE BASIN (4.96 ACRES)
- ==== STORM WATER OUTFALL 200 DRAINAGE BASIN (5.40 ACRES)
- ==== STORM WATER OUTFALL 300 DRAINAGE BASIN (11.80 ACRES)
- ==== STORM WATER OUTFALL 400 DRAINAGE BASIN (2.89 ACRES)
- ==== STORM WATER OUTFALL 500 DRAINAGE BASIN (0.50 ACRES)
- CONSTRUCTION BOUNDARY



**NOTES:**

1. IN THE OUTFALL 001 DRAINAGE BASIN A SERIES OF DITCHES, CULVERTS, AND DROP INLETS WITH ASSOCIATED PIPING COLLECT STORM WATER FROM AROUND THE SITE AND DIRECT IT TOWARD THE DAY POND. INLET PROTECTION SHOULD BE INSTALLED AROUND DROP INLETS THAT COLLECT STORM WATER FROM DISTURBED AREAS.
2. ADDITIONAL BMPs WILL BE ADDED AS NECESSARY AS CONSTRUCTION PROGRESSES.
3. RECEIVING STREAMS: UNNAMED TRIBUTARIES OF FLAT CREEK

PETROLEUM STORAGE	
PS1	GAS & DIESEL FUEL
PS2	DIESEL FUEL & OIL
PS3	FUEL OIL STORAGE (OUT OF SERVICE)
PS4	OIL
PS5	DIESEL FUEL
PS6	AIR COMPRESSOR OIL/HYDRAULIC OIL
PS7	OIL, REFRIGERATION OIL, HYDRAULIC OIL
PS8	USED OIL
STORAGE	
S1	SALVAGE EQUIPMENT/EQUIPMENT STORAGE
S2	CONTRACTOR AREA
S3	MOBILE EQUIPMENT
S4	PIPE STORAGE
MATERIAL LOADING/UNLOADING	
ML1	LOW DENSITY AMMONIUM NITRATE TRUCK & RAIL LOADING
ML2	MISCELLANEOUS RAW MATERIALS UNLOADING AREA
ML3	HIGH DENSITY AMMONIUM NITRATE TRUCK & RAIL LOADING
ML4	MOLTEN TRUCK UNLOADING
ML5	NITRIC & SULFURIC ACID RAILCAR UNLOADING
ML6	NITRIC ACID TRUCK LOADING
ML7	SULFURIC ACID TRUCK LOADING

2042.000.G2

**CONSTRUCTION SWPPP  
SITE MAP 1**  
EL DORADO CHEMICAL COMPANY  
EL DORADO, ARKANSAS

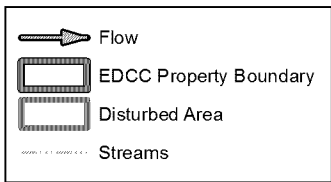
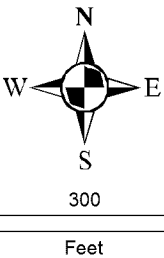
Approved by: JUF	Project No.: 2042-99-010
Checked by: JUF	Date: 09/01/2014
Drawn by: IT	Scale:
<b>GBMC</b> STANDARD ENVIRONMENTAL SERVICES	
315 Bruce Lane Spring Hill, TN 37074	

SHOWN



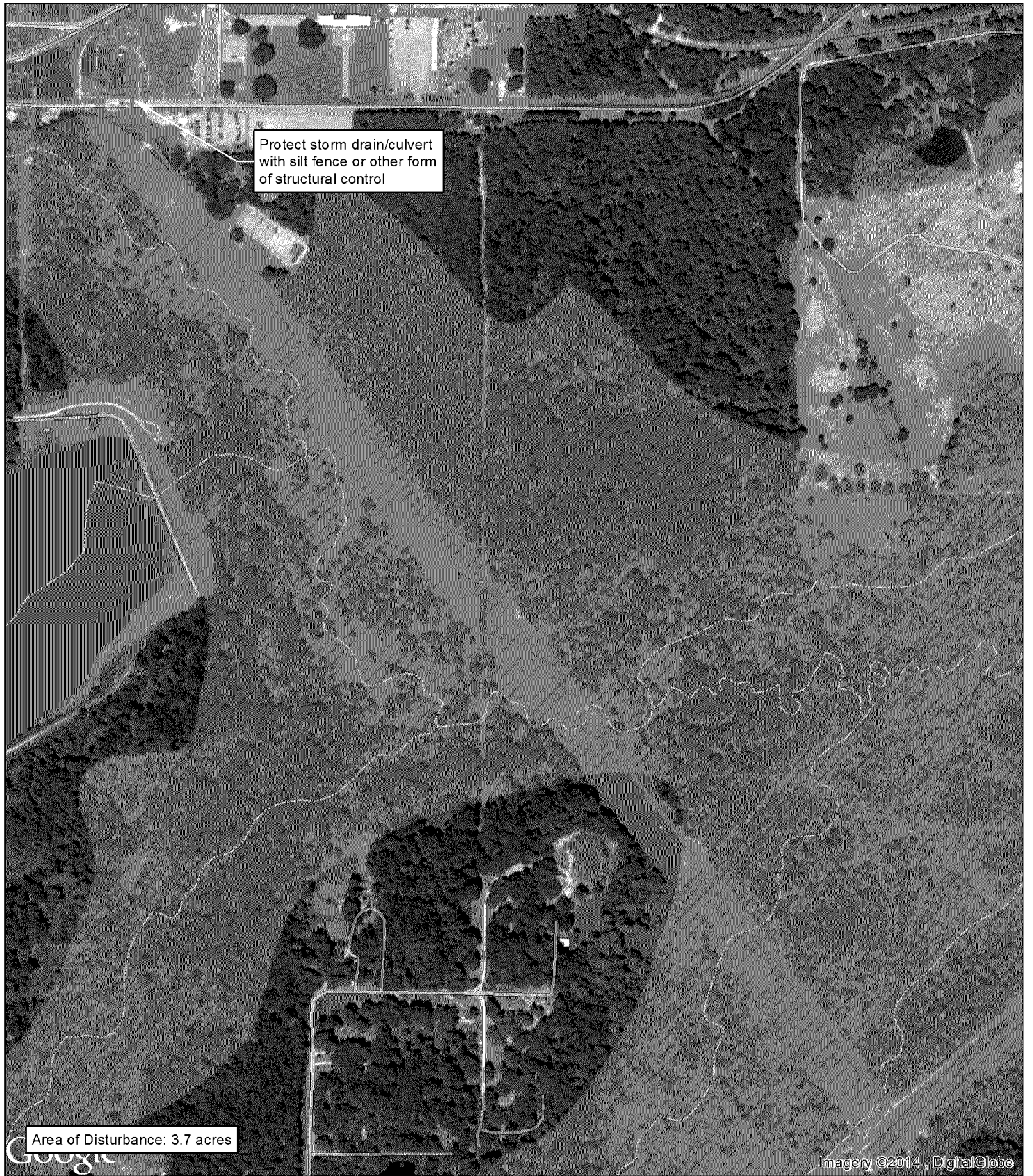
Note:  
 Majority of storm water flows into existing pits. BMPs will include continued diversion of storm water to pits and preserving existing and surrounding vegetation to the extent possible.

Area of Disturbance: 4.5 acres



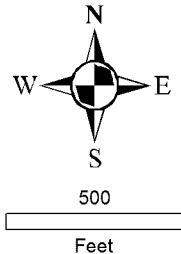
Note: Install additional BMPs as needed from inspections.

2042.000.G3	
CONSTRUCTION SWPPP SITE MAP 2	
EL DORADO CHEMICAL COMPANY EL DORADO, ARKANSAS	
Approved by: JJF	Project No.: 2042-99-010
Checked by: JJF	Date: 09/01/2014
Drawn by: IT	Scale: SHOWN



Area of Disturbance: 3.7 acres

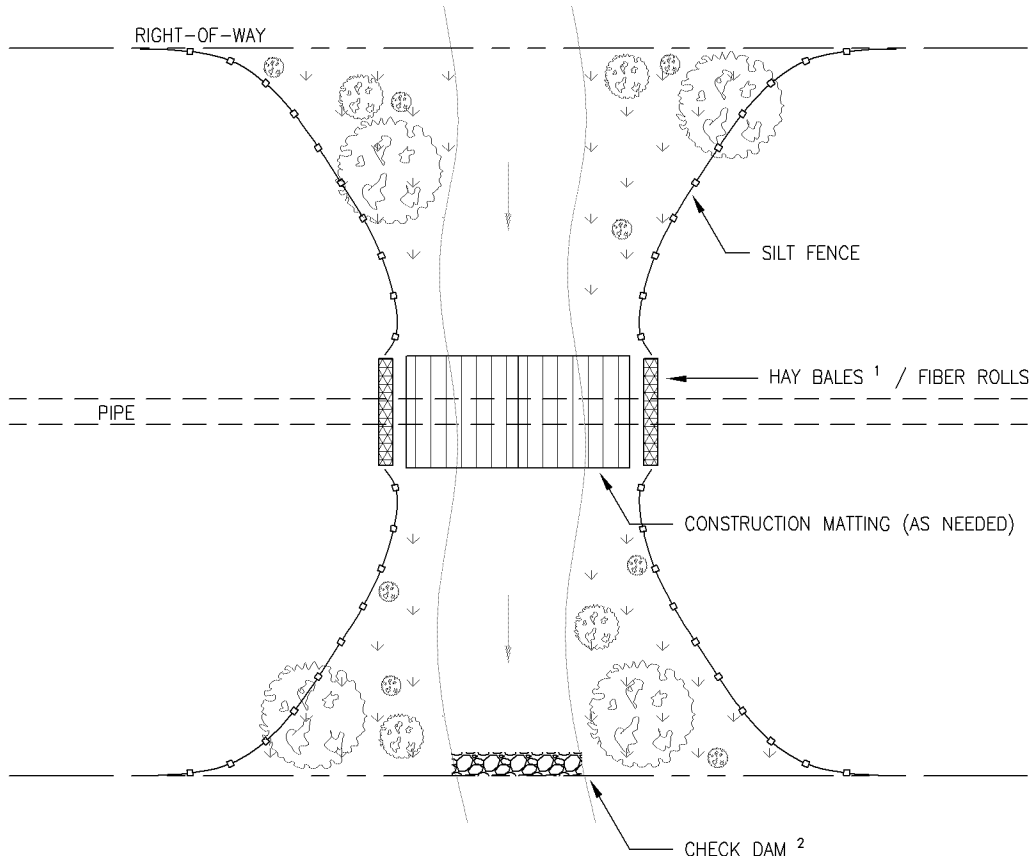
Imagery ©2014, DigitalGlobe



	Silt Fence
	Disturbed Area
	Streams
	Wetlands

Note: Install additional BMPs as needed from inspections.

2042.000.G4	
CONSTRUCTION SWPPP SITE MAP 3 EL DORADO CHEMICAL COMPANY EL DORADO, ARKANSAS	
Approved by: JJF	Project No.: 2042-99-010
Checked by: JJF	Date: 09/01/2014
Drawn by: IT	Scale: SHOWN



<sup>1</sup> HAY BALES SHOULD BE TRENCHED IN ~4" TO AVOID UNDERCUTTING. THEY MAY BE REMOVED FOR EQUIPMENT TO CROSS STREAM, BUT SHOULD BE PUT BACK IN PLACE ONCE TRAFFIC HAS CEASED.

<sup>2</sup> ONLY EPHEMERAL AND INTERMITTENT DRAINS.

2042.000.G5				
<b>TEMPORARY STREAM CROSSING BMP</b> EL DORADO CHEMICAL COMPANY EL DORADO, ARKANSAS				
Approved by:	JFF		Project No.:	2042-99-010
Checked by:	JFF		Date:	09/01/2014
Drawn by:	IT		Scale:	NTS